



**WAVERLEY PRIMARY SCHOOL**

*Inspiring today's learners to thrive in tomorrow's world*



### Board of Trustees Update:

Kia Ora

We are pleased to report our Community/Whanau/Family Partnership Plan is well underway. The initial set up is now complete and we are undertaking the next process which will collect everyone's voice from all our stakeholders. This will come in the way of a few questions which we will ask everyone from our students, parents/whanau and our community. This will look to commence at the beginning of term two with everyone being able to have their say in answering what is important to them, their children and the school. We hope to have this all collated and present you with the outcomes and recommendations within term 2. This is your chance to shape what our school community will look like into the future. So please make sure you give us your constructive feedback when one of the trustees call you. We are also looking for you to come and work alongside us in moving this committee forward, we would love it if you can spare some time and meet with us to drive this partnership plan further, please tell us when we call you if you would be interested in this.

The board is currently undertaking professional development which will add to their governance skills to lead the school into the future. We are also meeting with other school boards to gain a broader understanding of how other boards govern their schools and what benefits and challenges they have.

Our school management have also been undertaking professional development with the 18 schools involved in the Community of Learning. This provided both shared ideas to cater for all learners and providing high expectations for our learners.

Our personnel appointments have had an addition with our new teacher Denny Kumeroa being appointed on a fixed term position with us from the start of term 2 to the end of term 1 2019 to cover Mrs Rutten's maternity leave.

As you will be aware National Standards have been abolished. The school is now working on continuing to deliver reports to parents that are easy to follow and celebrate the success and progress of each student.

Our next board meeting will be held on the 28th of May (due to school holidays in April), so we invite you to come along. The board minutes are available to be viewed in the school office please feel free to read these.

Until the next update.

Nga Mihi  
Belinda Price  
Board of Trustees Chairperson

Happy  
Easter!  
School  
returns on  
Wednesday  
4<sup>th</sup> April



### Term 1 Events

- |                     |   |
|---------------------|---|
| <b>Thurs 29 Mar</b> | - Yr 6 Return from Mangatepopo Camp<br>Break for Easter holiday |
| <b>Wed 4 April</b>  | - School returns. Y4-5 vertical horizons camp                   |
| <b>Fri 6 April</b>  | Free wheels day   |
| <b>Fri 13 April</b> | - End of term   |

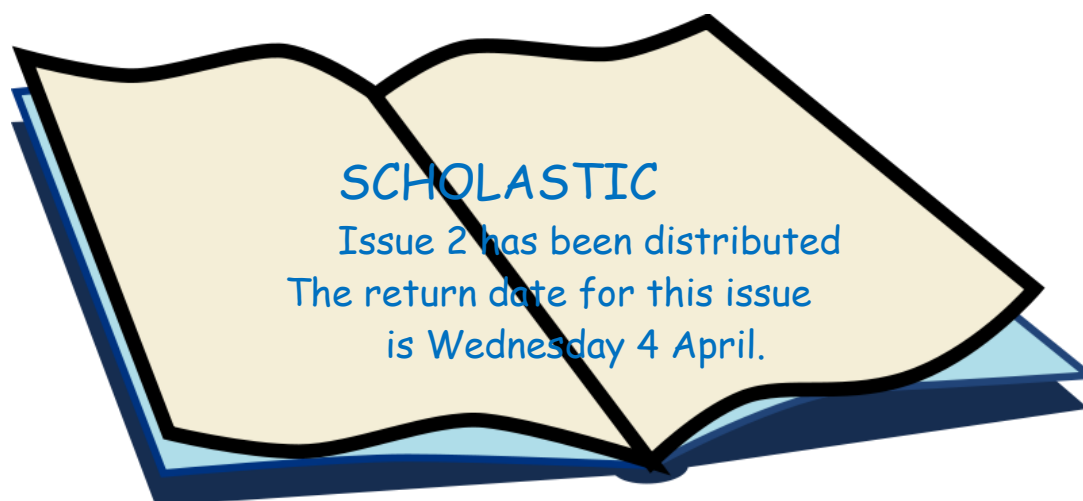
### Uniforms For Sale

**Polo Shirts:** Three size 10, four size 8, two size 6 and one size 12. All \$5.00 each. All have wear and tear but still tidy.

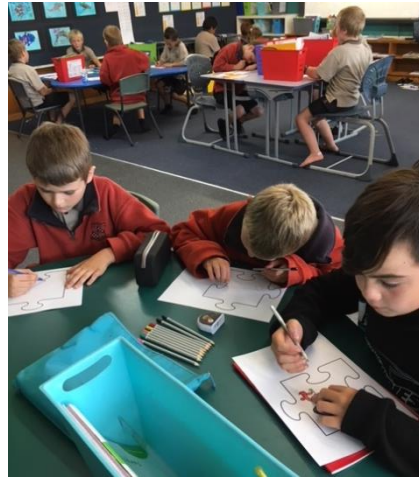
**Polar fleece:** Two size 6. one size 10 and one size 14. These are \$15.00 ea. These are in good condition. No marks or tears.

Email: [jennicorbett2285@gmail.com](mailto:jennicorbett2285@gmail.com)

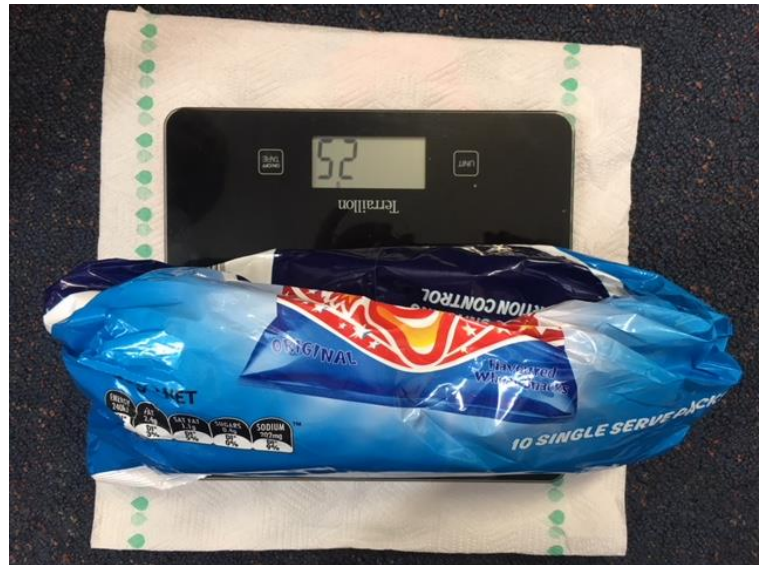
Ph: 02041186951



Each week one class will be sharing photos of their learning & activities.  
Check out Kowhai Hub



Students working on their puzzle art. Also inquiry pictures - exploring how much rubbish we generate as a class.





**Our school values**  
**Respect self** – **respect others** – **respect environment**

**By Media Team - Eidee, Diaz, Kaya and Victoria.**  
**FUNDRAISING GROUP!**



## **INTRODUCTION**

Hi, we are the Media Team, and today we are persuading you to help our school Fundraise for the benefits of our school and also for your children.

## **WHAT WE'RE FUNDRAISING ABOUT?**

The Media Team is going to organise a fundraising group to help with our school. The Fundraising Team will be fundraising towards new equipment for our school like picnic tables etc. And we will also be fundraising for our gardens including seeds and flowers and veggies to grow over the winter.

## **HOW WE ARE GOING TO MAKE THESE THINGS HAPPEN**

We are going to fundraise by having bake sales, more sausage sizzles, mufti days, scavenger hunt, etc.

## **WHO CAN JOIN?**

Everyone! That even includes you, yes you, parents, teachers and kids. So I hope you would like to join and help our school environment!!