



WAVERLEY PRIMARY SCHOOL

Inspiring today's learners to thrive in tomorrow's world



Principal's Message

Welcome back to school. It has been great to see so many excited and motivated learners throughout the school during the first week. I would like to take this opportunity to welcome new students and families to our school whanau. We know you will have a wonderful time with us. We have an exciting term planned with Talent Time kicking off again soon, a visit from the Life Education bus, swimming events, learning about reduce, reuse and recycle and much more!

As many of you will know, in the holidays we **fare-welled** Mr Priest as a member of our staff. Allan had a wonderful business opportunity offered to him over the holidays, which was very suitable to him and his wife. We wish Allan all the best for his new venture. We now have two new teachers at Waverley Primary School. **Miss Nicola Campbell** is the teacher in the Kauri Hub. Her strengths are working with senior learners and providing personalised learning opportunities. **Miss Justine Clark** is teaching in Manuka Hub. Her strengths are in e-learning and providing engaging learning experiences for junior students. A warm welcome to the team and it is a pleasure to have you with us.

Teamwork and communication are essential to your child's success in education. If you would like to discuss your child's learning or well-being, **your first point of contact is your child's classroom teacher**. Our lead teachers are also available to talk to if extra information is required. Brooke Skedgwell is the leader for Kauri and Kowhai Hubs and Teana McKechnie for the Rimu and Tawa. We look forward to working together to ensure your child has a successful learning journey.

Wheels days are very popular amongst our students. We have considered their feedback and we are pleased to announce that every second Friday will be an optional free wheels day for all students during break times! Appropriate safety gear is a must. The first wheels day will be Friday 9th February.

In addition to Waitangi day being a holiday on Tuesday 6th February, school will also be closed on Monday 5th February. Have an enjoyable **long weekend**.

Kerri McColl
Principal



Phone: 346 5087

Mrs Sanson is very excited to be taking Reading Recovery this year.



Welcome to our new 5 year olds who all started on the first day of the term.

www.waverleyprimary.co.nz

Cell phone: 027 346 5081

Term 1 Events

- | | |
|----------------------|---|
| Mon 5 Feb | - School closed |
| Tues 6 Feb | - Waitangi Day - school closed |
| Thurs 8 Feb | - Yr 4-8 senior swimming practice - town pool |
| Fri 9 Feb | - Free wheels day - no assembly |
| Mon 12 Feb | - Yr 7-8 Technology starts
Life Education Bus arrives |
| Tues 20 Feb | - Yr 4-8 senior swimming practice - town pool
Board meeting 5.00 p.m. Staff room |
| Wed 21 Feb | - Community picnic at town pool 4-6 p.m. |
| Thurs 22 Feb | - Yr 4-8 senior swimming practice - town pool 4-6 p.m. |
| Fri 23 Feb | - Free wheels day |
| Tues 27 Feb | - Senior swimming sports Y4-8, town pool 12.30 p.m. |
| Thurs 1 Mar | - Cluster swimming sports - town pool Yr 4-6 |
| Fri 9 Mar | - Free wheels day |
| Mon 19 Mar | - Board meeting - 6.00 p.m. Staff room |
| Thurs 22 Mar | - Yr 1-3 Junior swimming sports in school pool 1.30 p.m. |
| Fri 23 Mar | - Free wheels day |
| Mon 26 Mar - | - Yr 6 Mangatepopo Camp |
| Thurs 29 Mar | Break for Easter holiday |
| Wed 4 April - | - School returns. Y4-5 vertical horizons camp |
| Fri 6 April | Free wheels day |
| Fri 13 April | - End of term |

Friday Assembly - 2.30 p.m. in the school hall.

Rimu (Y7&8) will be presenting assembly.

Everyone most welcome

Reminder to parents:

If you are paying directly into school bank accounts for uniforms, stationery or any sporting activities the account number is 01-0795-0004979-00 (WPS committee account)

Money for all camps should be paid into account number: 01-0795-0006739-00 (WPS Mangatepopo Account). Many thanks.

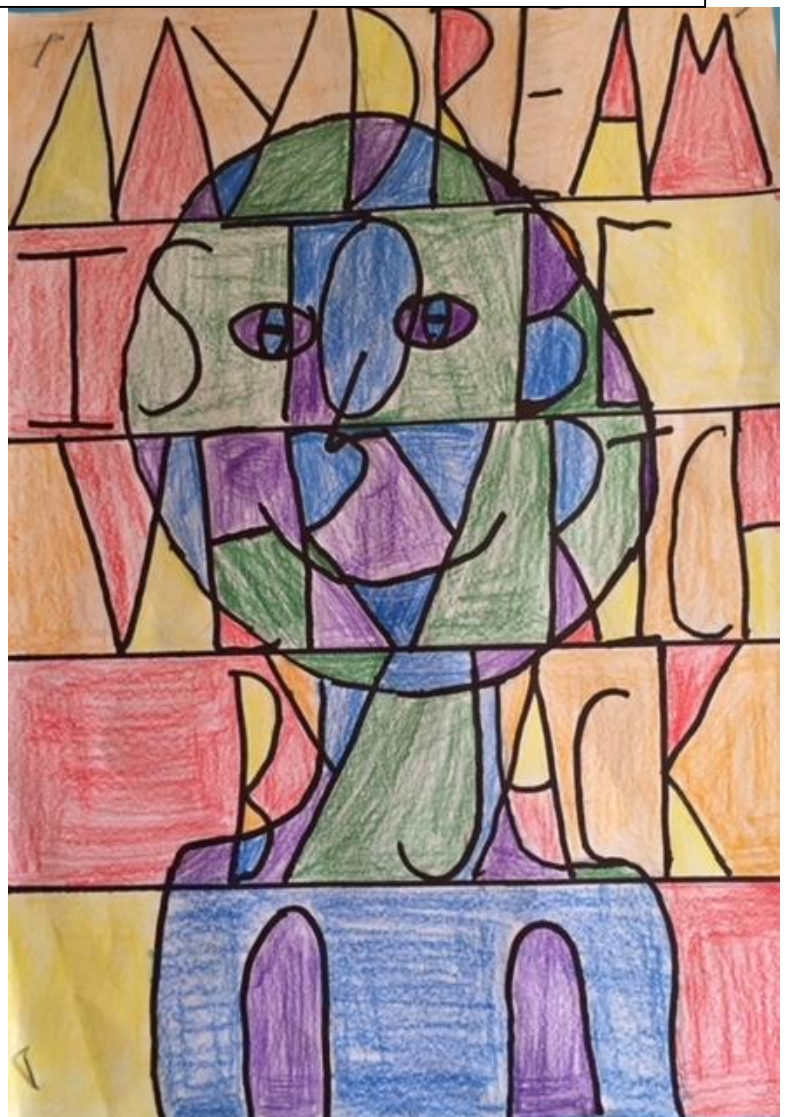
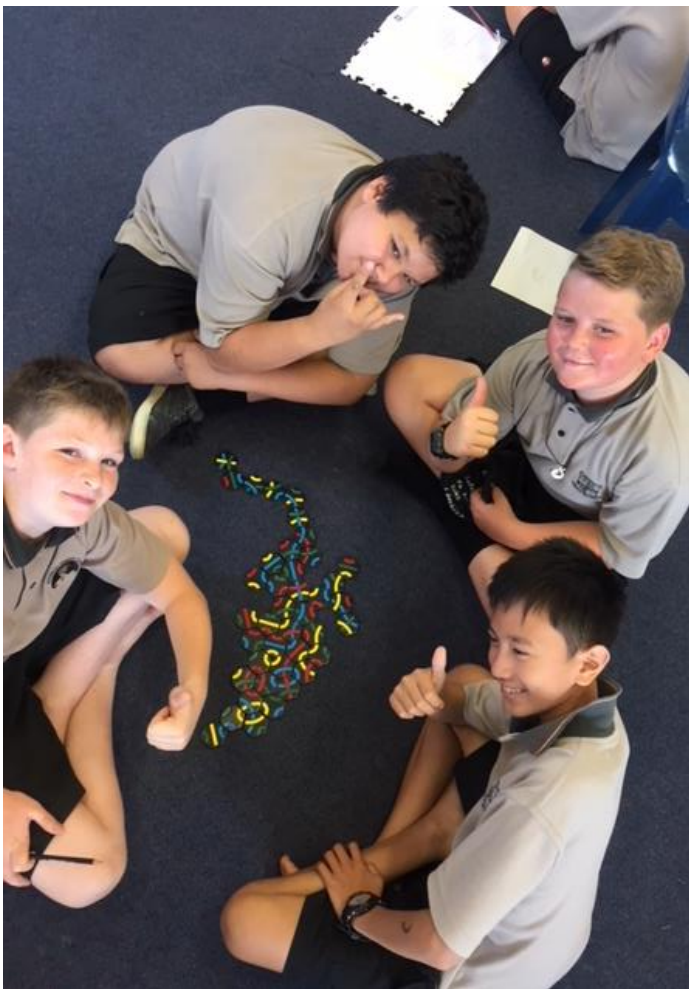
Scholastic

Issue one has been sent home today. Return date is Tuesday 13 February.

**Each week one class will be sharing photos of their learning & activities.
Check out Rimu Hub**



What a great first week we have had in Rimu Hub! Working together, setting up how we would like our class to operate in a way that reflects our school values and really thriving with our learning!



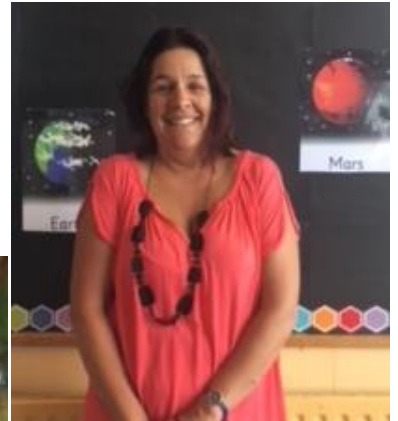
Our school values

Respect self – respect others – respect environment



We would like to introduce Miss Campbell who is the new Kauri Hub teacher.

We are the media team. We will be in charge of the last page of the newsletter. We will be sharing with you the awesome things we do at school to show our school values.



Welcome to Miss Clark who came all the way from Wellington to teach in the lovely Manuka Hub.

