



WAVERLEY PRIMARY SCHOOL

Inspiring today's learners to thrive in tomorrow's world



Kia ora e te whānau,

The end of Term 3 is almost upon us, but that doesn't mean things have been slowing down here at Waverley Primary School!

Kauri and Kowhai Hubs enjoyed a wonderful day out on Tuesday at Lake Rotokare Scenic Reserve in Eltham, learning all about the uniqueness of the area and continuing our learning with Jess from the Taranaki Kiwi Trust. Pack a picnic and head out for a visit if you haven't been there before...it is a stunning 230 hectares of native NZ bush, in which over 250 kiwi are thought to call home. We couldn't have managed the day without the support of the parent helpers who joined us, so thanks to each and every one of you.

Staff and students have been working extra hard to get ready for our upcoming production in Week 2 of next term. Tickets are now on sale at the office for our three shows. On Wednesday October 18th we have a matinee lunchtime show, followed by another show that evening. We also have a second evening show on Thursday 19th. I recommend getting in quickly to buy tickets for the show you want. Tickets are \$5 each. Make sure to ask the whole family; we want as many people to see "The Amazing Adventures of Superstan" as possible.

Tonight we have our much anticipated Country and Western themed school disco from 4.30pm-6pm in the school hall. Please bring a gold coin for entry. There will be a variety of yummy treats for sale as well. I can't wait to see all of our cowboy and cowgirl outfits! A big thanks go to our fabulous PFA for organising another fun event for our learners.

From next week, building work on Kauri and Kowhai Hubs in the senior block begins. These two classes will be working out of the two empty rooms in the junior block for the duration of the project. We look forward to some modern and fresh new learning spaces to work out of soon!

Finally, just a reminder that Term 4 is a sun hat term at school. If your child needs a new hat you may like to purchase one before the end of term from the office for \$10, so your child is prepared for the first day back after the holidays.

Kia pai tō rā whakatā - Have a great weekend.

Hannah Lupton
Deputy Principal

Term 3

Thurs 14 Sept

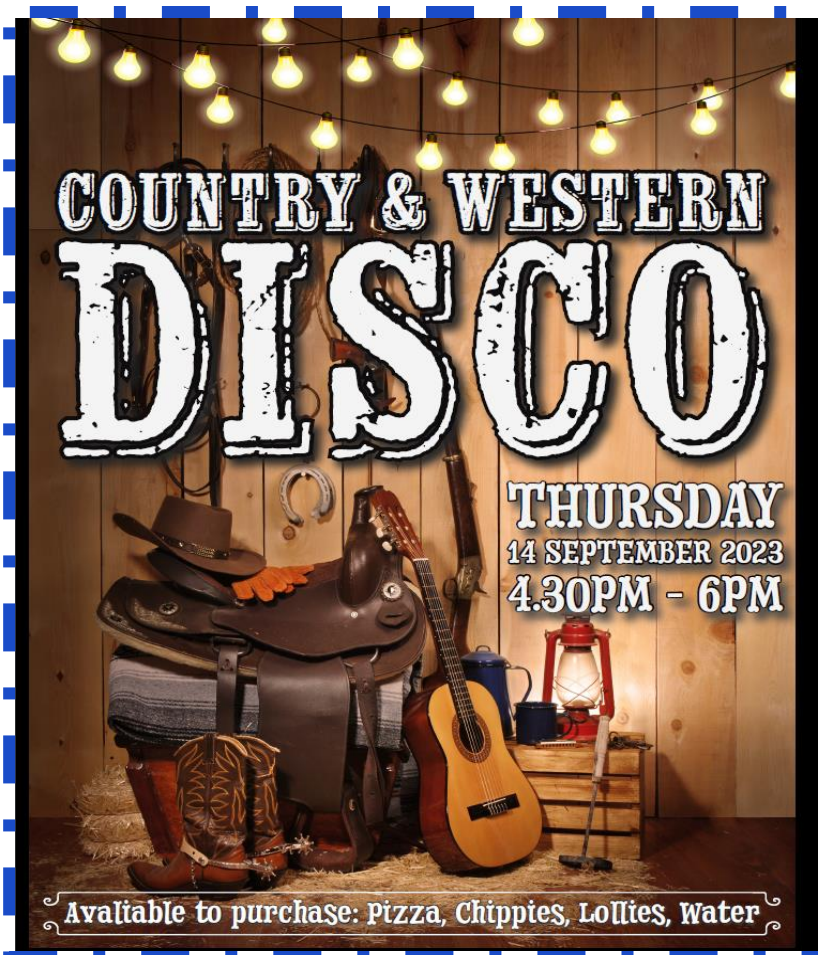
Mon 18 Sept

Tues 19 Sept

Fri 22 Sept

- **DISCO - Country & Western theme**
- Board of Trustees Meeting - 5.30 pm
- PCT Challenge 1pm Wanganui
- Whole school free mufti and wheels day
- Term finishes

ASSEMBLY - Manuka Hub will be presenting assembly this Friday in the school hall at 2.30pm. Everyone most welcome



**Royal Whanganui
Opera House -
Sunday 24 September
10.30 am & 1.00 pm**

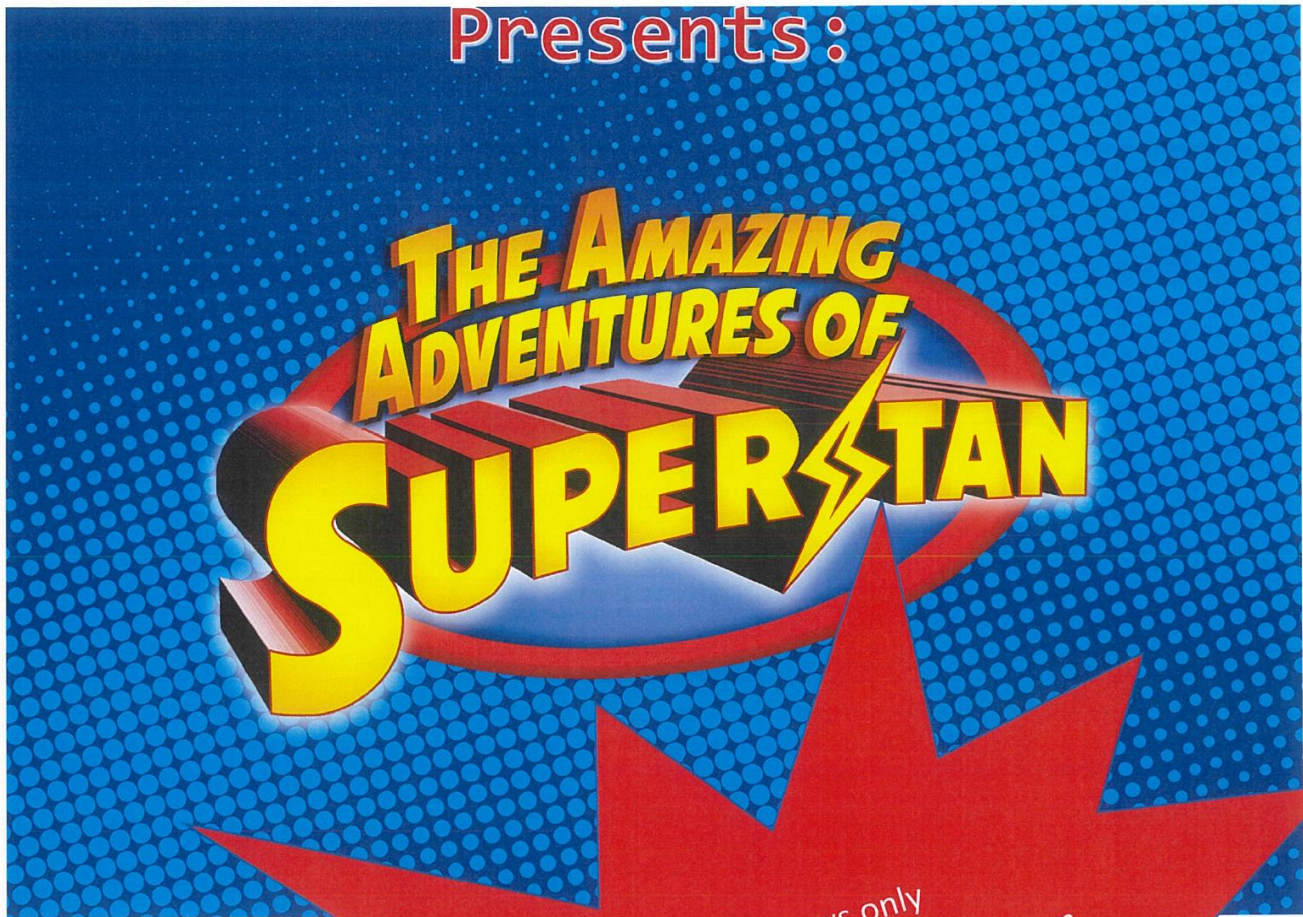
**Each week one class will be sharing photos of their learning & activities.
Check out Kowhai Hub**

Class trip to Lake Rotokare. Where the students learnt about kiwi and their habitats, predators and trapping.



Waverley Primary School

Presents:



Three Shows only

Wednesday 18th – Matinee 12.00pm

Wednesday 18th – Night Show 6.30pm

Thursday 19th – Night Show 6.30pm

Tickets can be purchased from the
school office or by emailing
secretary@waverleyprimary.co.nz
\$5 per person